

LCD Backlight (CCFL Lamp) Installation Procedures

Requirement Tools:

20-35 Watt Soldering Station

Small Philip Screw Drivers

Small Flat Screw Driver

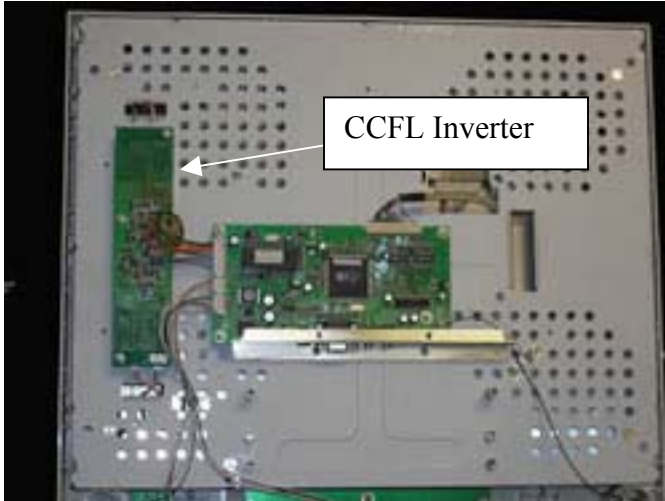
Solder paste

Sharp knife

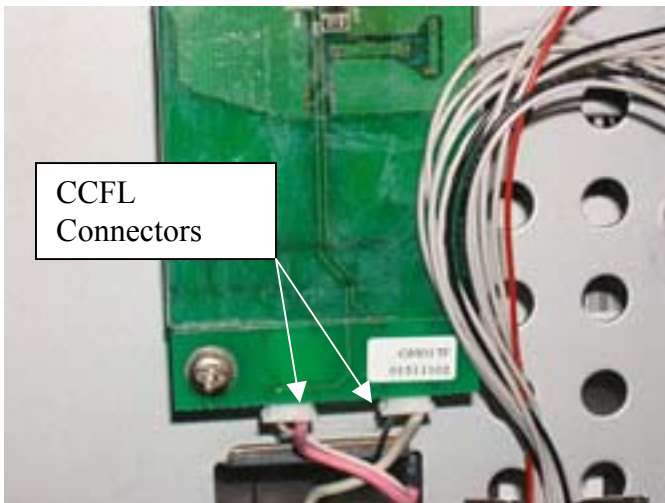


LCD Backlight (CCFL Lamp) Installation Procedures:

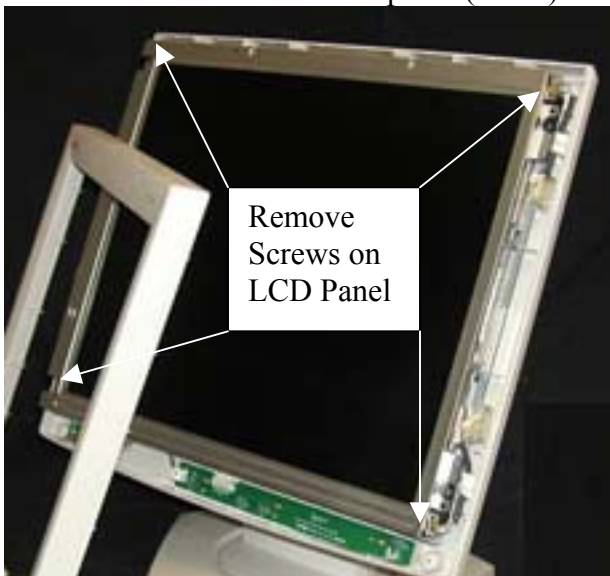
Remove Back Cover and locate the CCFL Inverter.



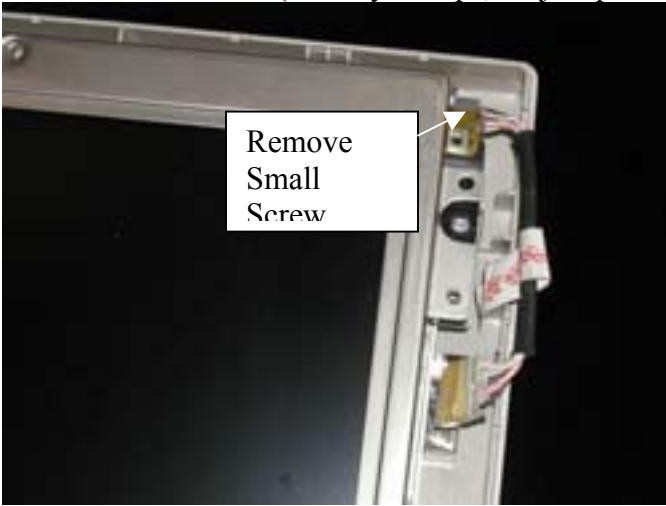
Disconnected the CCFL Connectors.



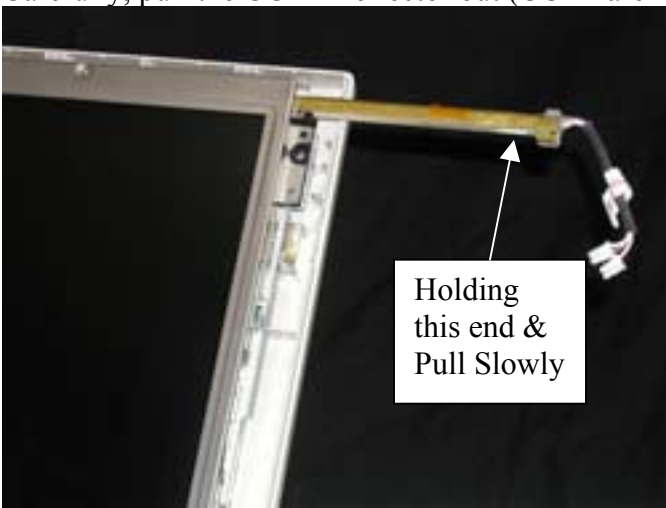
Remove LCD Panel on Front panel (Bezel).



Remove small screw (Usually Philips, Or just plastic Clicks, then you should use small Fate screw driver)



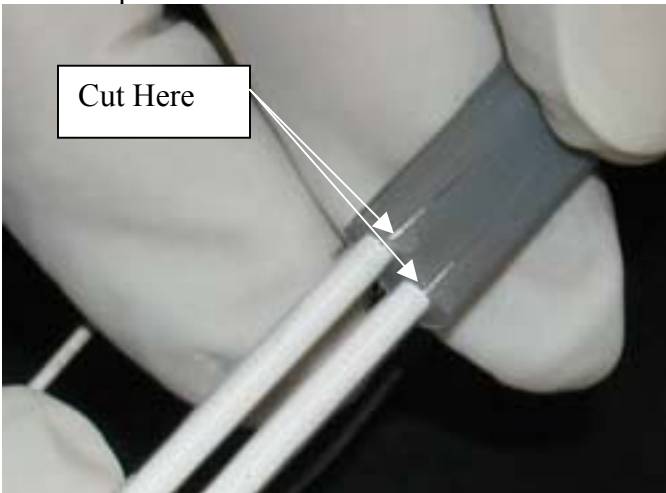
Carefully, pull the CCFL Reflector out (CCFL are inside of this Reflector).

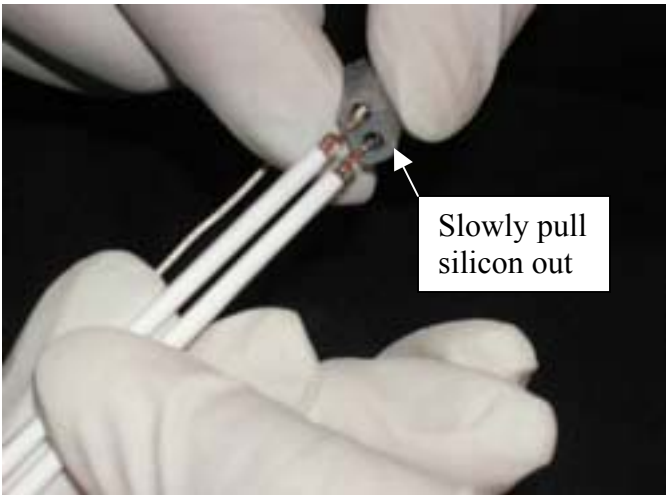


Remove CCFL Lamps From Reflector

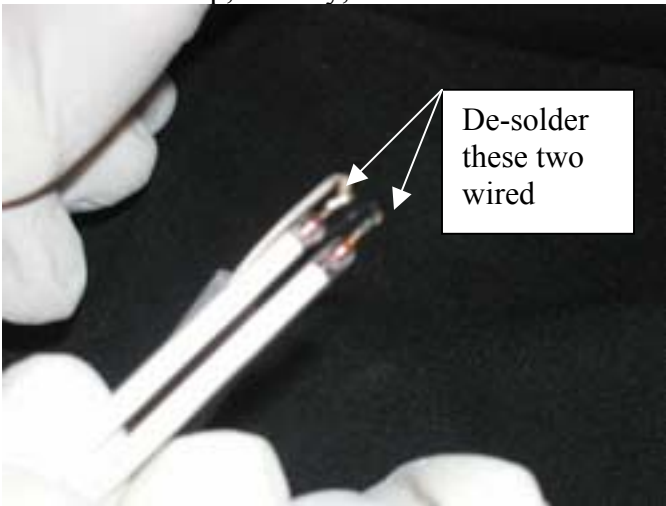


Use Sharp knife to cut the silicon.

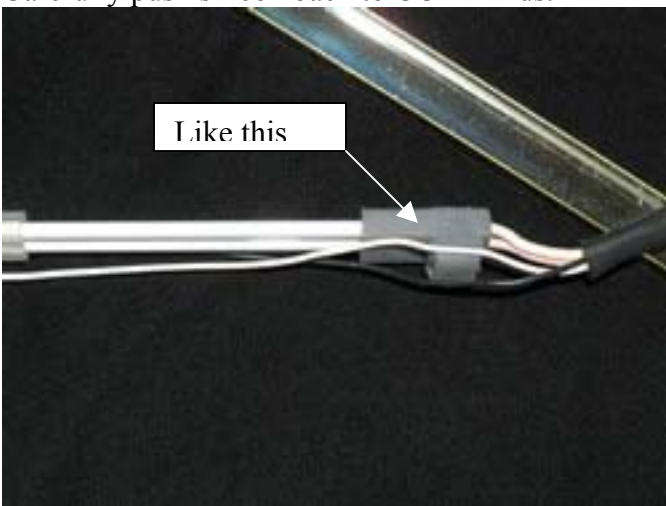




De-solder the wire on old CCFL and Replace with new CCFL Lamps. Remember, you need to cut the wires on new CCFL Lamp, Usually, it is about 8-10mm between wire and CCFL Lamp's glass.



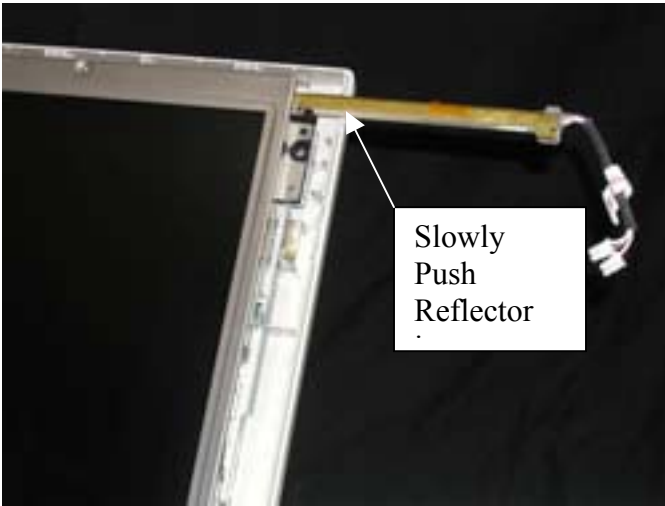
Carefully push silicon back to CCFL Ends.



Reinstall CCFL Lamps back to Reflector.



Reinstall the Reflector back to LCD Panel.



Connect CCFL back to CCFL Inverter.
Carefully check all the connections and that's it.

Photos: Top two—Cornea CT1700 17" LCD Monitor. All others--- Compaq TFT8000 18'1" LCD Monitor.
Disclaimer: This LCD Backlight installation instruction is for your reference only, Please use them as guideline.